

Facade system

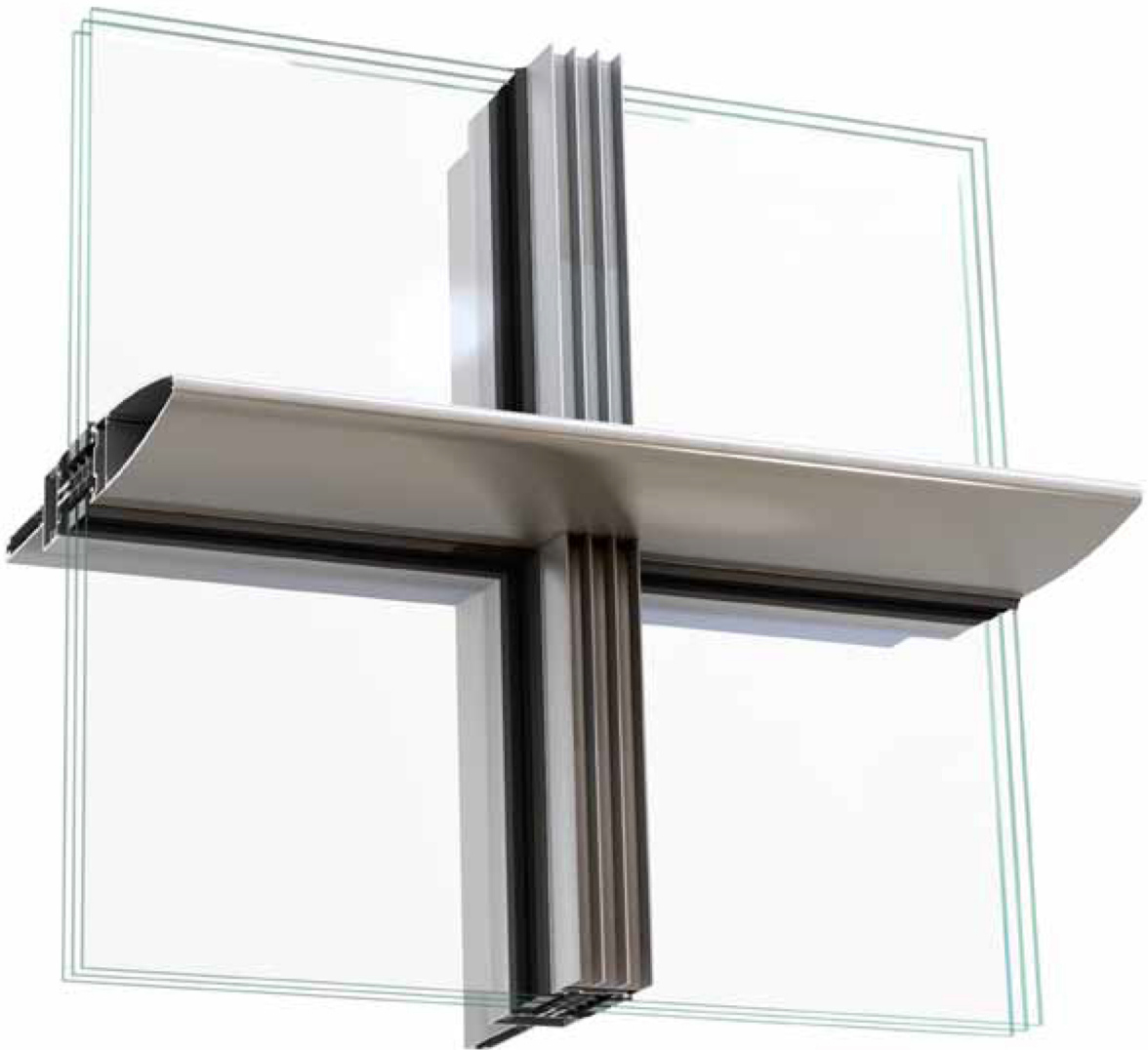
Sapa Facade 4150 SX

The SX thermal break in 4150 SX is specially designed with a multi-chamber system that provides high insulating characteristics. The system provides the right conditions for energy efficient solutions for your project.

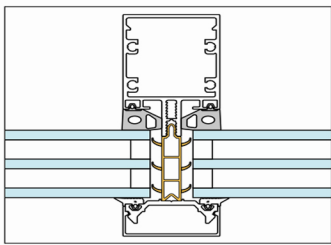
Sapa 4150 SX is easy to install and offers great freedom of design and various functions. The facade can be designed as a facade performed as self-supporting curtain wall, facade performed as partition between slabs, or double-skin facade. The rebate is suitable for **triple glazing units** with thickness up to 56 mm.

The system is **single pane ventilated/ drained**, i.e. each glass pane or filling pane is vented and drained separately which reduces the risk of condensation damage, leakage and cooling of the mullions. In addition, the system is produced with **two-step sealing** where the external sealing strip functions as a "raincoat" and the internal sealing strip constitutes the main seal (air/water).

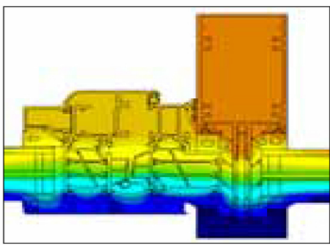
The system is flexible and can easily be **integrated** with our door systems, window systems, solar shading and solar cells. There is even a wide range of interior **mullions/ transoms** and exterior **decorative profiles** for greater freedom of design.



Facade system 4150 SX with decorative profile Expressive 42695 vertical, 68823 horizontal, anodised with "stainless look".

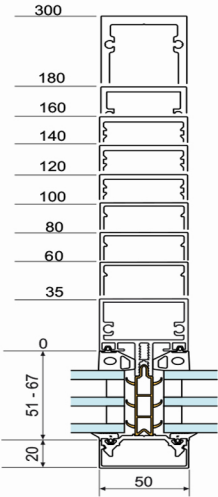


4150 SX, highly insulated profiles

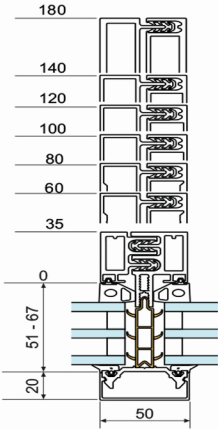


A thermal analysis photo displays the high degree of heat insulation

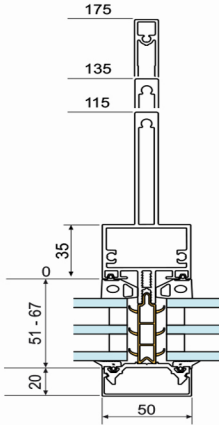
The same profile and can be used both vertically and horizontally, which gives better material usage. Easy installation simplifies the building process. Glazing is always done from the outside of the construction.



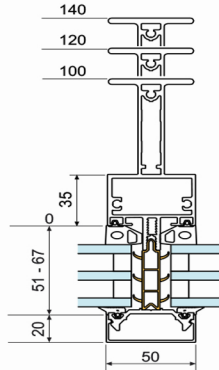
Facade 4150 SX with rectangular mullion/transom



Facade 4150 SX with split mullion



Facade 4150 SX with T-shaped mullion/transom



Facade 4150 SX with I-shaped mullion



Sapa 4150 SX at Science and Innovation centre in Sarpsborg, Norway.