

SFB 2050

Doors/Entrance elements

Door system SFB 2050 is our basic door system, which has been well tested for many years. The door system is based on uninsulated sections. The depth of the sections is 50 mm, and the external beads are integrated into the sections.

The range contains door sections for both narrow and modular section locks. Doors are available with anti-squeeze back edge - in this version the hinges are hidden in the bottom and top edge. The door leaf is

mitred in the top edge and screwed together in the bottom part with a 150 mm deep rail. The door leaf can be also mitred in all four corners, which increases the rigidity of the door leaf. The rebate provides space for single glass, double glazing units or infill panels.

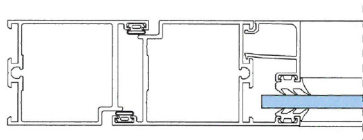
The door system sections can be anodised or powder coated with various colours and type of surface finish on the inside and on the outside.



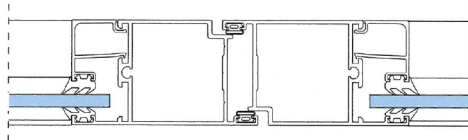
Frame/door leaf combination

Door system SFB 2050 enables different combinations of frame and door leaf sections. Door leaf sections for narrow and modular locks are available for inward and outward opening doors. Frame sections, door leaf

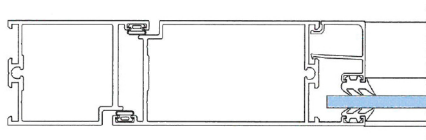
sections, and glazing beads can be combined with various colours and type of surface finish on the inside and on the outside. For example, powder coated frame sections and clear anodised door leaf sections.



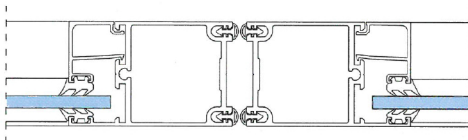
Narrow section



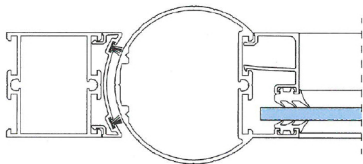
Meeting door, narrow section



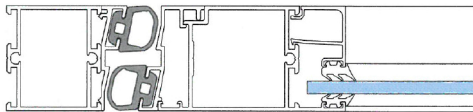
Modular section



Double-leaf door without stop bead, narrow section

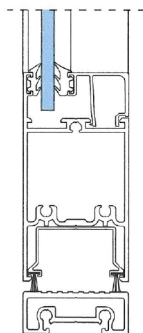


Anti-squeeze back edge, rounded aluminium section

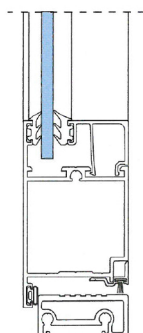


Anti-squeeze back edge, rubber strips

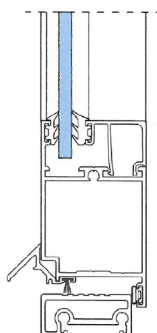
Door leaf/threshold combinations



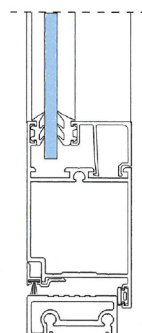
150 mm deep bottom rail with brush seal



Fully mitred door leaf, outward opening with stop seal



Fully mitred door leaf, inward opening with stop seal



Fully mitred door leaf, inward opening with stop seal